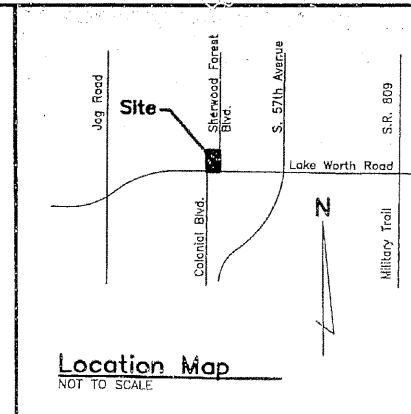


A PLAT OF SHERWOOD PLAZA

PORTION OF THE EAST 1/2 OF THE SOUTHEAST 1/4
OF THE SOUTHEAST 1/4 OF THE SOUTHEAST 1/4,
OF SECTION 22, TOWNSHIP 44 SOUTH, RANGE 42 EAST
CITY OF GREENACRES, PALM BEACH COUNTY, FLORIDA

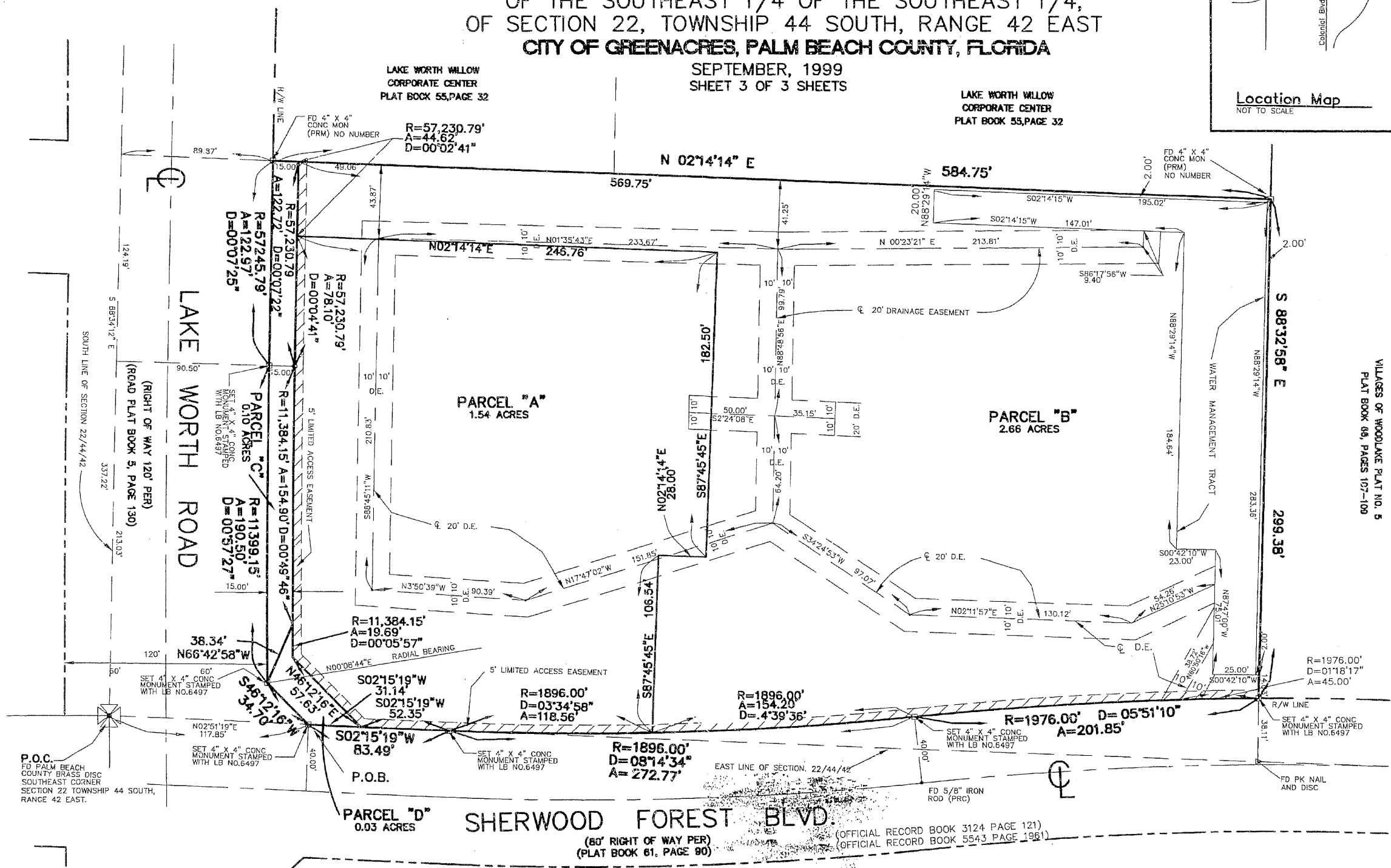
SEPTEMBER, 1999
SHEET 3 OF 3 SHEETS

LAKE WORTH WILLOW
CORPORATE CENTER
PLAT BOOK 55, PAGE 32



198

COUNTY OF PALM BEACH }
STATE OF FLORIDA }
This Plat was filed for record at
this ___ day of ___ 1999,
and duly recorded in Plat Book No. ___
on page ___
Dorothy H. Wilken Clerk of Circuit Court
by ___ D.C.



THIS INSTRUMENT WAS PREPARED BY: TONY PARZIALE
AMERICAN LAND SURVEYING, INC.
2833 EXCHANGE COURT, SUITE A&B WEST PALM BEACH, FLORIDA 33409
TELEPHONE (561) 471-5588 FAX (561) 471-5668